

Architecture of Enterprise Applications 18 Workflow

Haopeng Chen

***RE**liable, **IN**elligent and **Sc**alable Systems Group (**REINS**)*

Shanghai Jiao Tong University

Shanghai, China

<http://reins.se.sjtu.edu.cn/~chenhp>

e-mail: chen-hp@sjtu.edu.cn

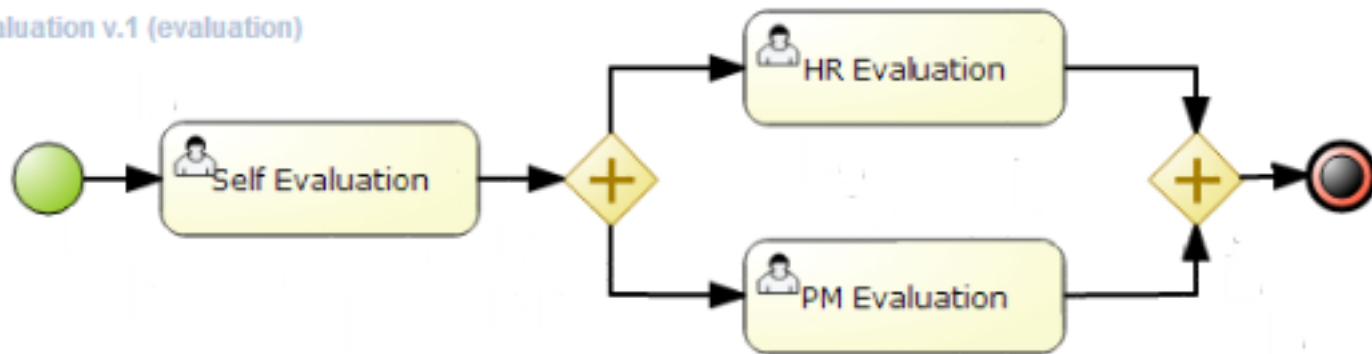
- Workflow
 - Basic concepts
- jBPM
 - Use jBPM
- Windows Workflow Foundation

- A **workflow**
 - consists of an orchestrated and repeatable pattern of business activity enabled by the systematic organization of resources into processes that transform materials, provide services, or process information.
- **Processes:**
 - A process is a more general notion than workflow and can apply to physical or biological processes, for instance.
- **Planning and scheduling:**
 - A plan is a description of the logically necessary, partially ordered set of activities required to accomplish a specific goal given certain starting conditions
- **Flow control**
 - is a control concept applied to workflows, to distinguish from static control of buffers of material or orders, to mean a more dynamic control of flow speed and flow volumes in motion and in process
- **In-transit visibility**
 - is a monitoring concept that applies to transported material as well as to work in process or work in progress, i.e., workflows.

What is jBPM?

- jBPM is a flexible Business Process Management (BPM) Suite.
 - It is light-weight, fully open-source (distributed under Apache license) and written in Java.
 - It allows you to model, execute, and monitor business processes throughout their life cycle.

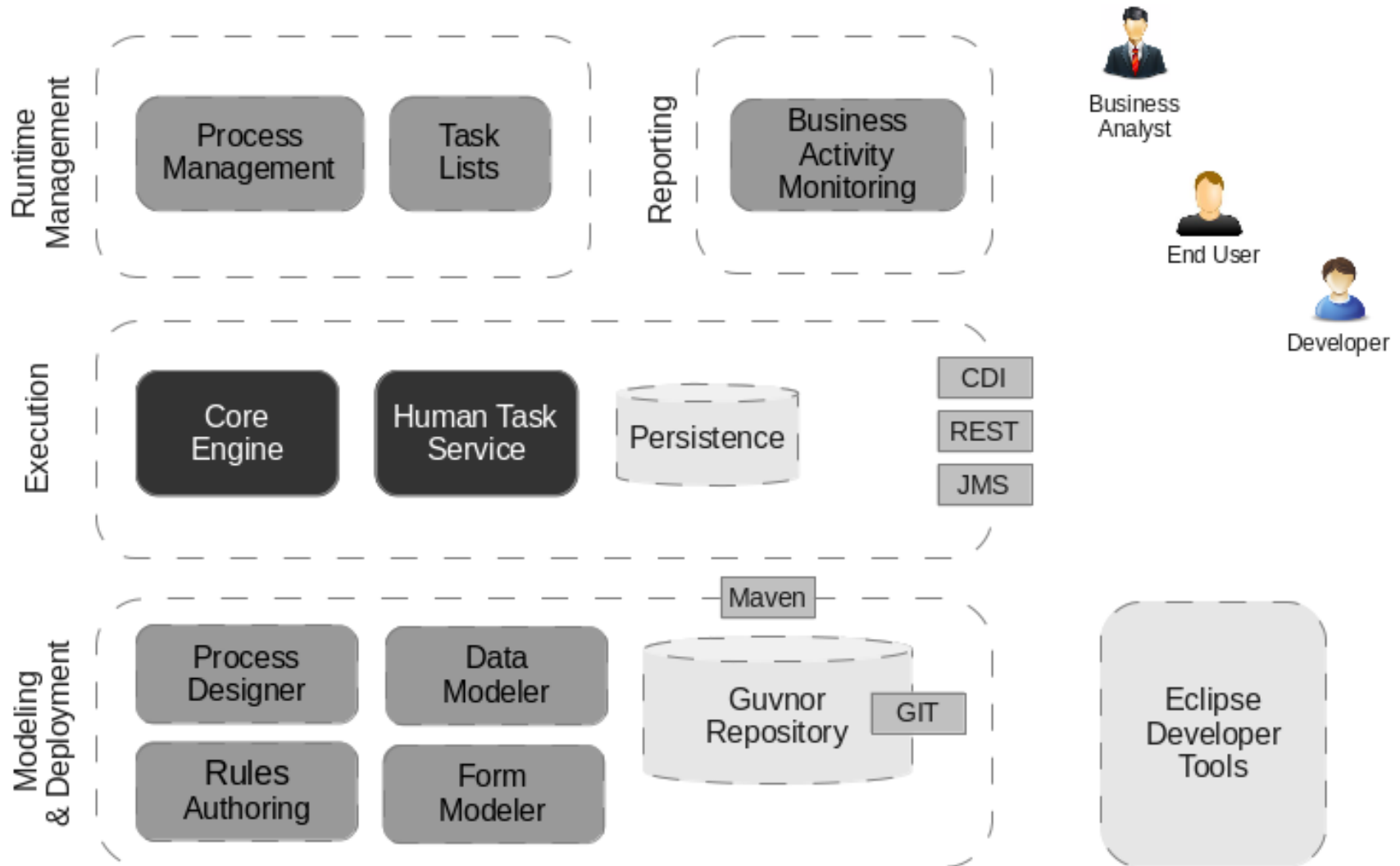
Evaluation v.1 (evaluation)



- A business process
 - allows you to model your business goals by describing the steps that need to be executed to achieve those goals, and the order of those goals are depicted using a flow chart.
- Business processes
 - need to be supported throughout their entire life cycle: **authoring, deployment, process management and task lists**, and **dashboards and reporting**.
- The core of jBPM is
 - a light-weight, extensible workflow engine written in pure Java that allows you to execute business processes using the latest BPMN 2.0 specification.
 - It can run in any Java environment, embedded in your application or as a service.

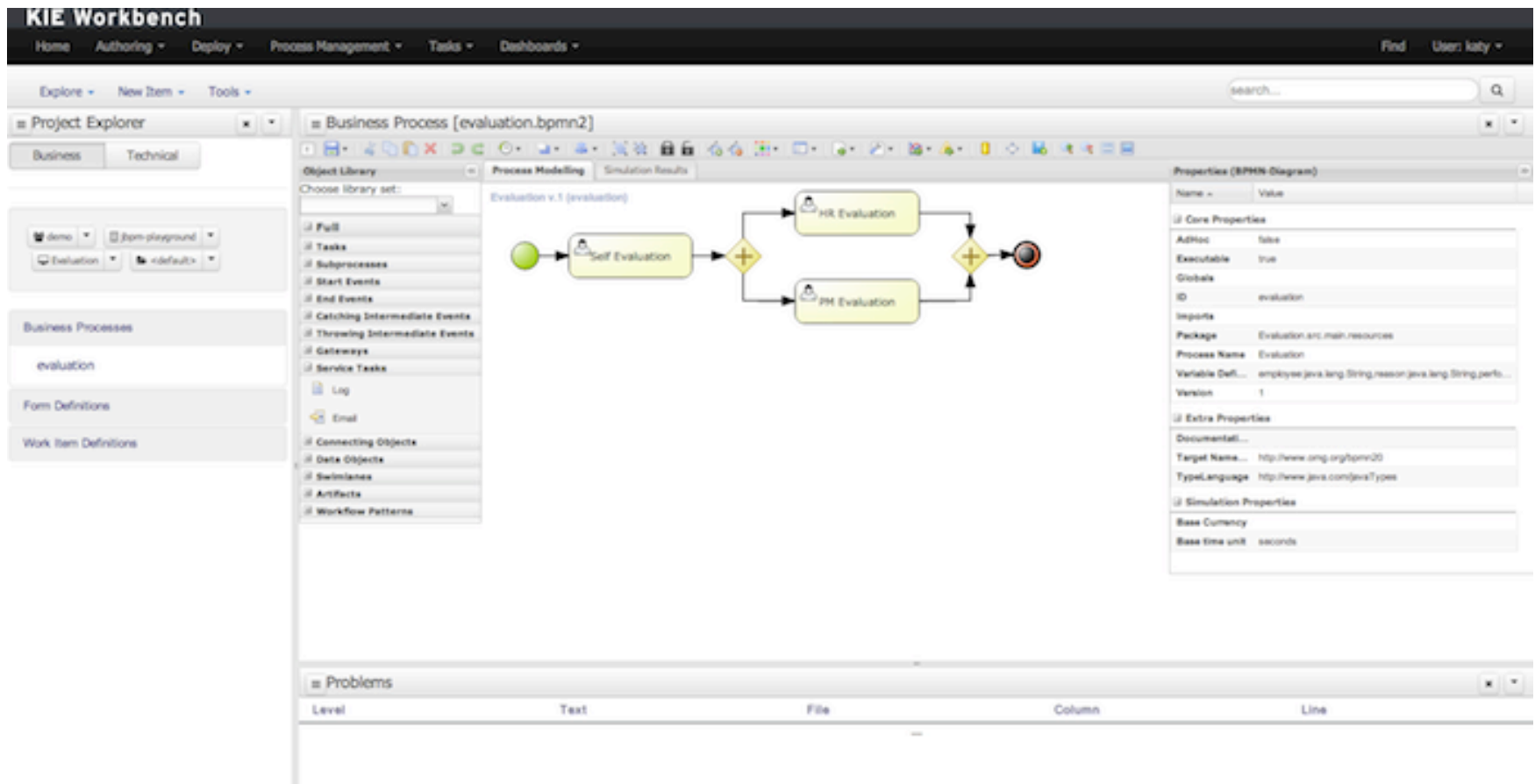
- On top of the core engine, a lot of features and tools are offered to support business processes throughout their entire life cycle:
 - **Pluggable human task service** based on WS-HumanTask for including tasks that need to be performed by human actors.
 - **Pluggable persistence and transactions** (based on JPA / JTA).
 - **Web-based process designer** to support the graphical creation and simulation of your business processes (drag and drop).
 - **Web-based data modeler and form modeler** to support the creation of data models and process and task forms
 - **Web-based, customizable dashboards and reporting**
 - **All combined in one web-based workbench**, supporting the complete BPM life cycle:
 - Modeling and deployment - author your processes, rules, data models, forms and other assets
 - Execution - execute processes, tasks, rules and events on the core runtime engine
 - Runtime Management - work on assigned task, manage process instances, etc
 - Reporting - keep track of the execution using Business Activity Monitoring capabilities
 - Eclipse-based developer tools to support the modeling, testing and debugging of processes
 - Remote API to process engine as a service (REST, JMS, Remote JavaAPI)
 - Integration with Maven, Spring, OSGi, etc.

Overview of jBPM?



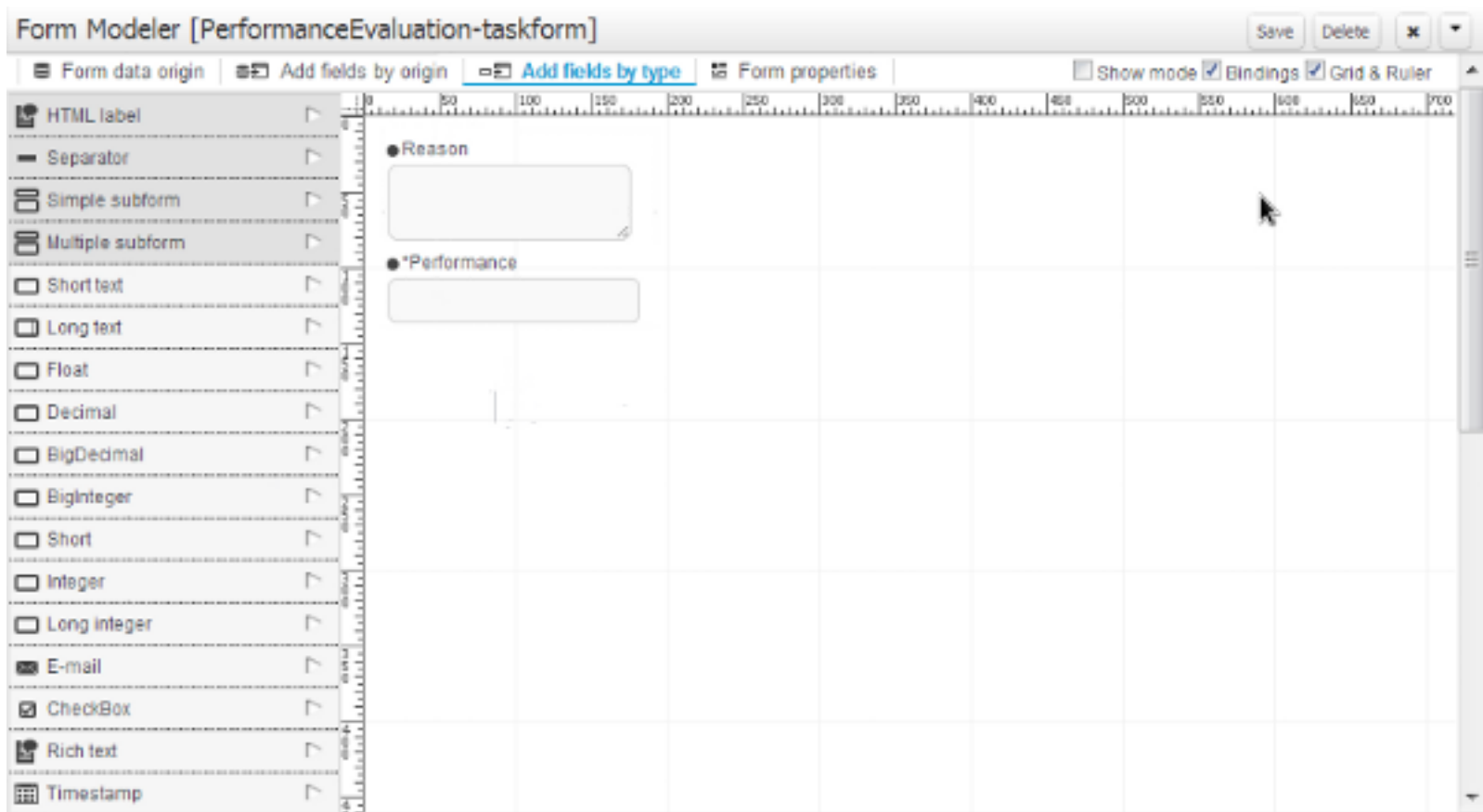
- The core jBPM engine is
 - the **heart** of the project.
 - It's a light-weight workflow engine that executes your business processes.
 - It can be **embedded as part of your application or deployed as a service** (possibly on the cloud).
 - Its most important features are the following:
 - Solid, stable core engine for executing your process instances.
 - Native support for the latest BPMN 2.0 specification for modeling and executing business processes.
 - Strong focus on performance and scalability.
 - Light-weight (can be deployed on almost any device that supports a simple Java Runtime Environment; does not require any web container at all).
 - (Optional) pluggable persistence with a default JPA implementation.
 - Pluggable transaction support with a default JTA implementation.
 - Implemented as a generic process engine, so it can be extended to support new node types or other process languages.
 - Listeners to be notified of various events.
 - Ability to migrate running process instances to a new version of their process definition

- The web-based designer allows you to model your business processes in a web-based environment.



- Processes almost always have some kind of data to work with.
- The data modeler allows **non-technical users to view, edit or create these data models.**
 - Typically, a business process analyst or data analyst will capture the requirements for a process or application and turn these into a formal set of interrelated data structures.
 - The data modelers is transparently integrate into the workbench.
 - Its main goals are to make data models into first class citizens in the process improvement cycle and allow for full process automation through the integrated use of data structures (and the forms that will be used to interact with them).

- The jBPM Form Modeler is a form engine and editor that enables users to create forms to capture and display information during process or task execution, without needing any coding or template markup skills.

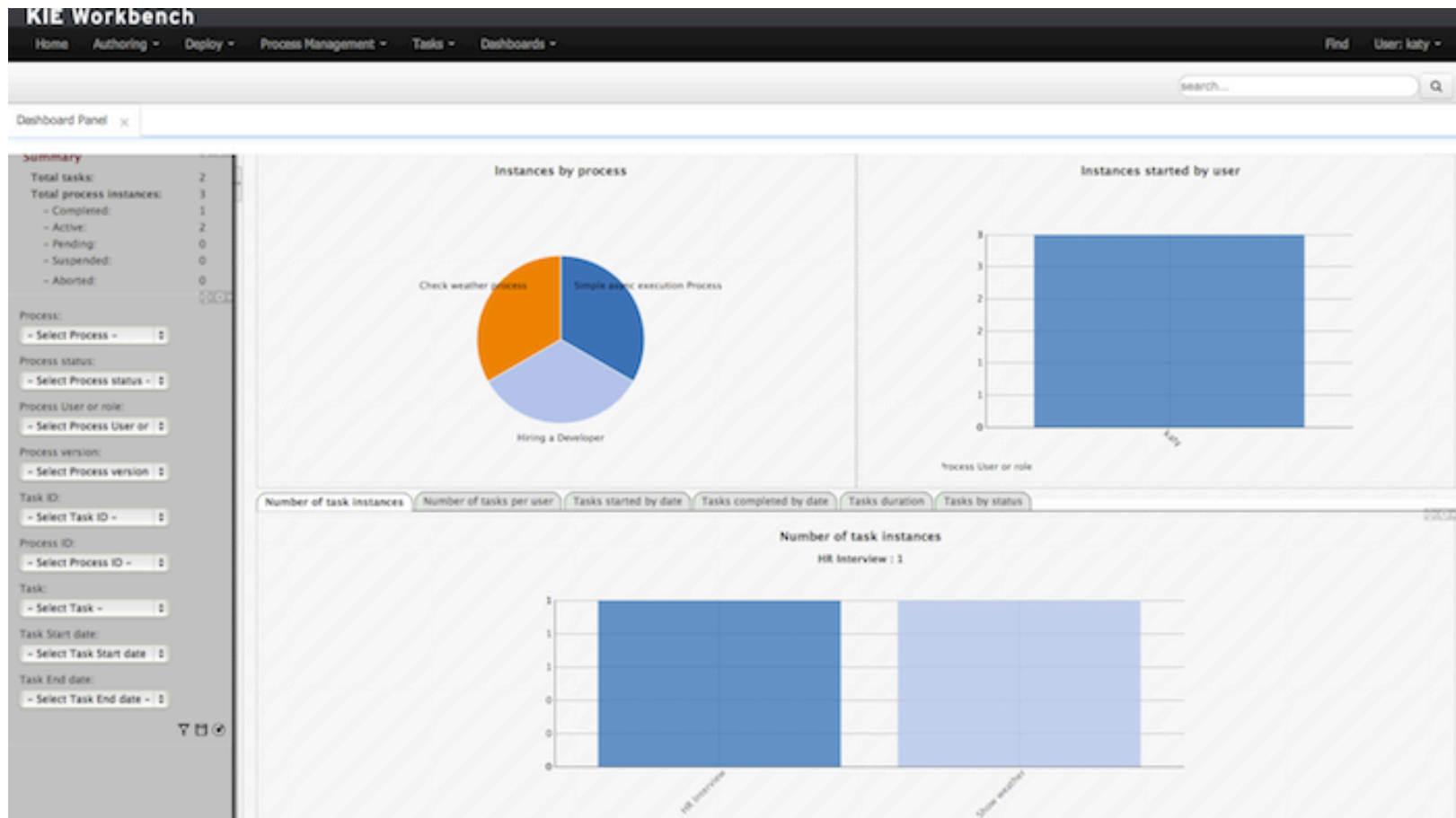


- Business processes can be managed through a web-based management console.

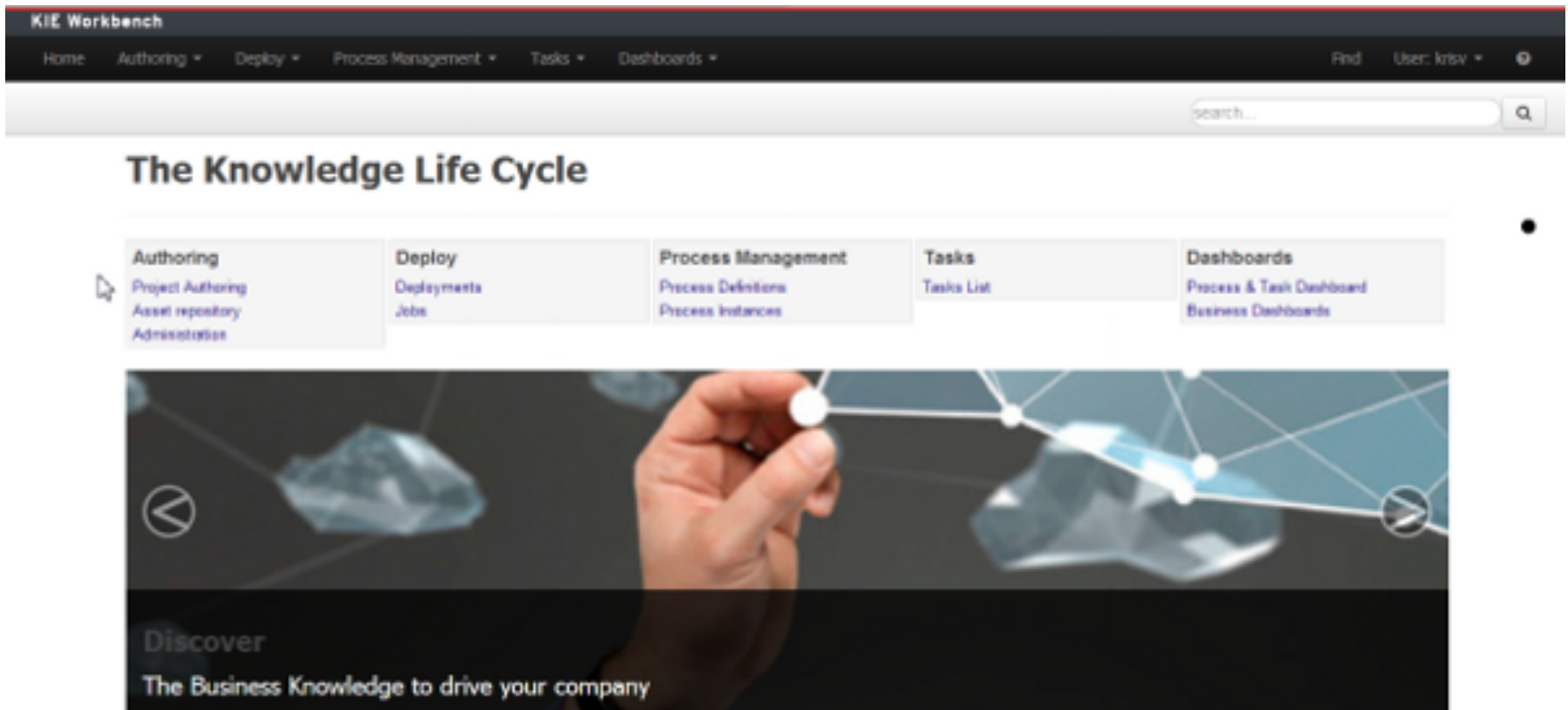
The screenshot displays the KIE Workbench web console. The top navigation bar includes links for Home, Authoring, Deploy, Process Management, Tasks, and Dashboards. The main content area is divided into two panes. The left pane, titled 'Business Process [hiring.bpmn2]', shows a process flow diagram for 'Hiring a Developer v.1 (hiring)'. The flow consists of a start node followed by six tasks: 'HR Interview', 'Tech Interview', 'Create Proposal', 'Send Proposal', 'Sign Contract', and 'Tweet New Hire', ending at a final node. The 'HR Interview' task is highlighted with a red border. The right pane, titled 'Instance Details', provides information about the selected process instance. It includes fields for Instance ID, Definition Id, Definition Name, Deployment, Definition Version, Instance State, Current Activities, and Instance Log.

Field	Value
Instance ID	1
Definition Id	hiring
Definition Name	Hiring a Developer
Deployment	org.jboss.kie:1.0
Definition Version	1
Instance State	Active
Current Activities	16/wr2/13 12:49:33: 1 - HR Interview (HumanTaskNode)
Instance Log	16/wr2/13 12:49:33: 1 - HR Interview (HumanTaskNode) 16/wr2/13 12:49:33: 0 - StartNode

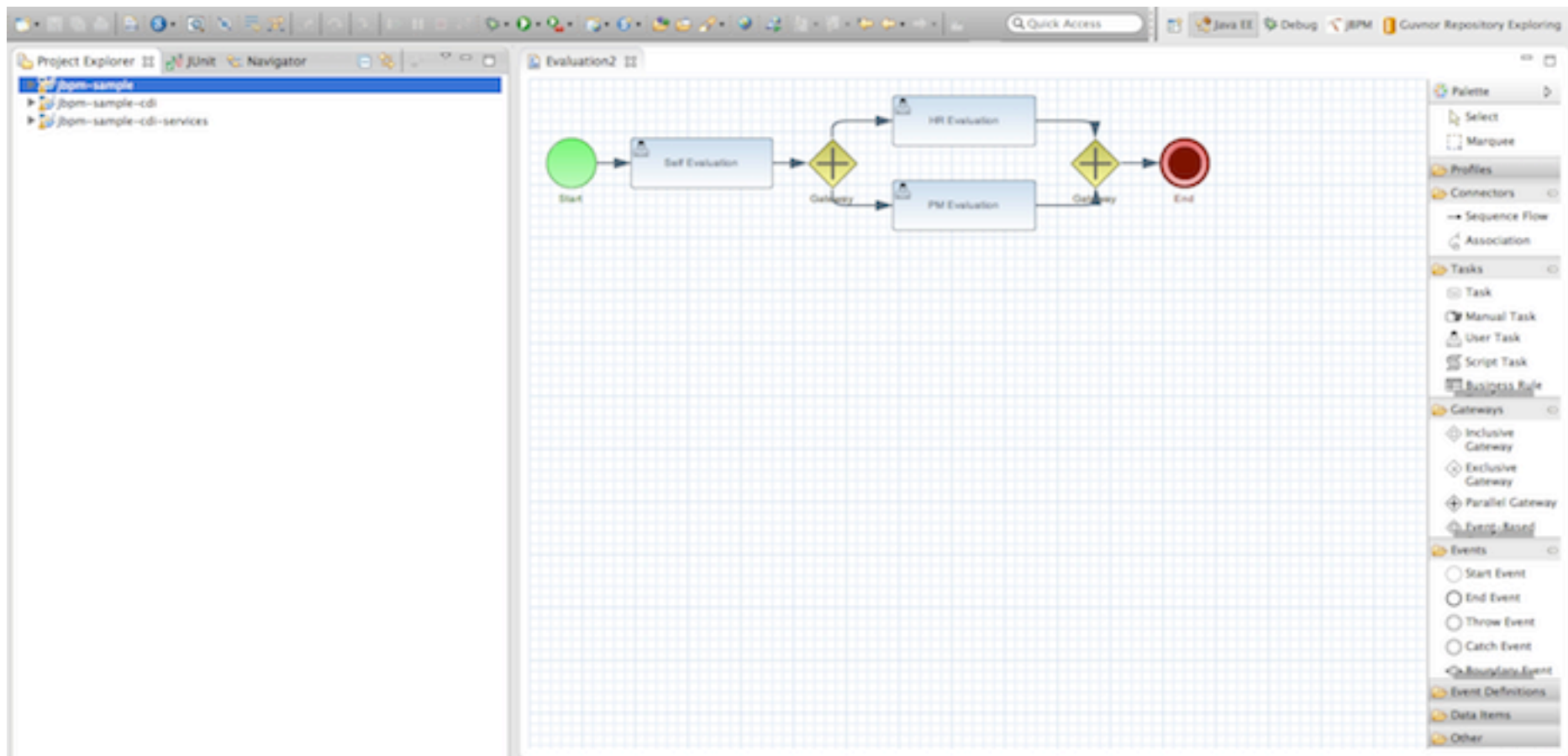
- As of version 6.0, jBPM comes with a full-featured BAM tooling which allows non-technical users to visually compose business dashboards.



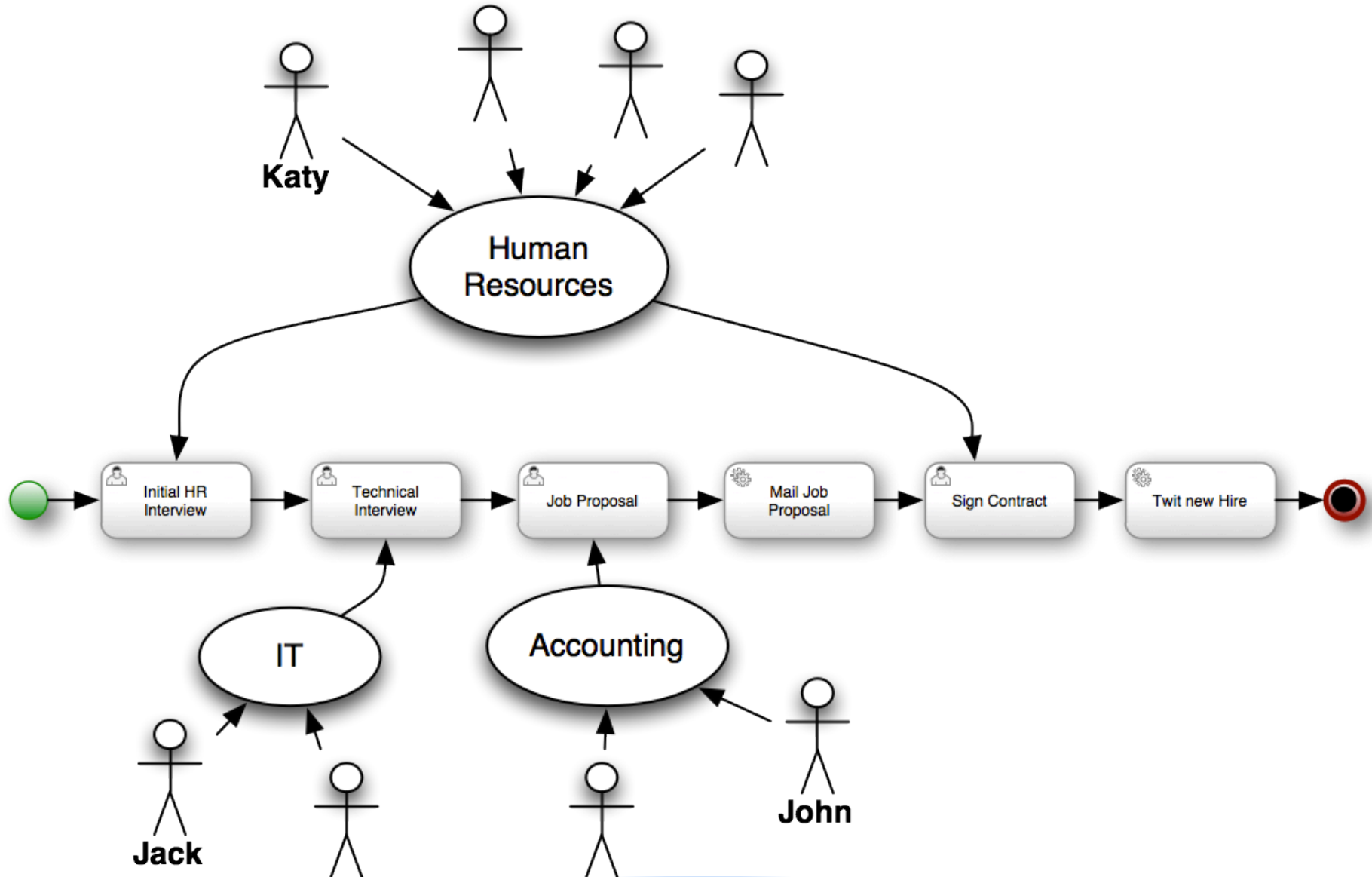
- The workbench is the web-based application that combines all of the above web-based tools into one configurable solution.



- The Eclipse-based tools are a set of plugins to the Eclipse IDE and allow you to integrate your business processes in your development environment.



Human Resources Example



The KIE Project: human-resources



REliable, INtelligent & Scalable Systems

KIE Workbench

HomeAuthoring ▼Deploy ▼Process Management ▼Tasks ▼Dashboards ▼FindUser: jbpm ▼

Explore ▼New Item ▼Tools ▼search...Q

Project Explorer

example ▼ / jbpm ▼ / human-resources ▼

BUSINESS PROCESSES

hiring

FORM DEFINITIONS

CreateProposal-taskform

hiring-taskform

HRInterview-taskform

SignContract-taskform

TechInterview-taskform

TEXT FILE

README

WORK ITEM DEFINITIONS

WorkDefinitions

Project: [human-resources:org.jbpm:1.0]SaveBuild & Deploy✕▼

Project General Settings

Project NameHuman Resources Example

Project Description

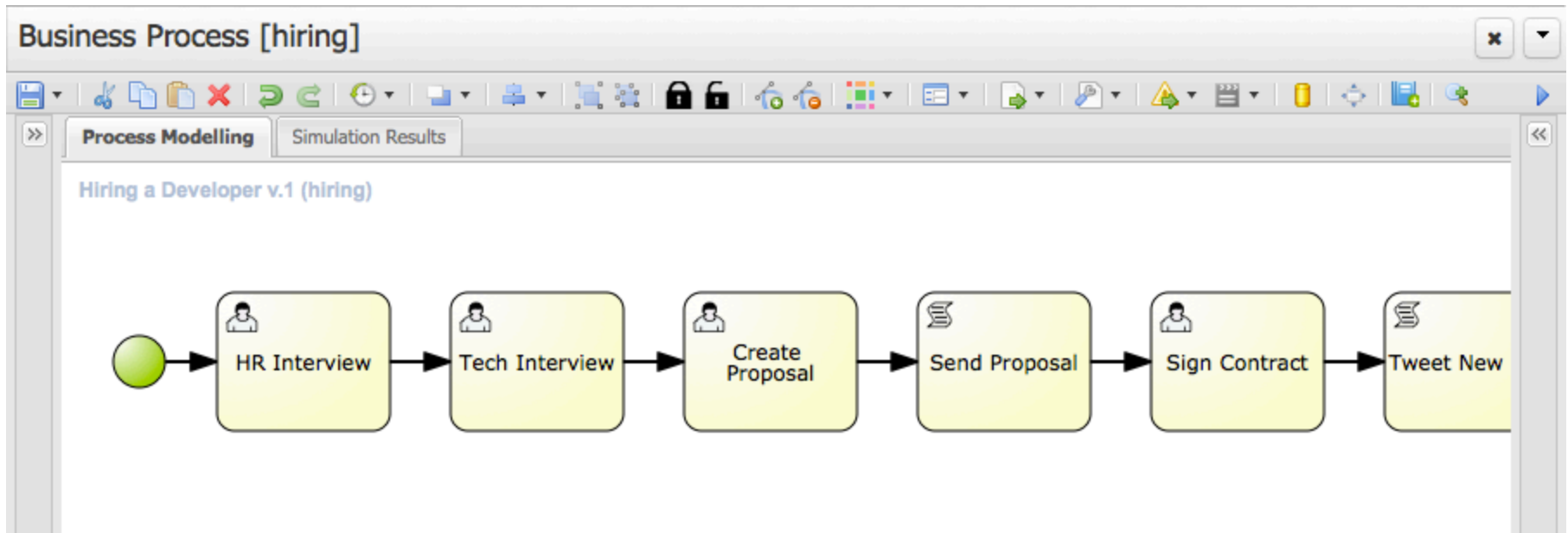
Insert a project description for documentation purposes ...

Group artifact version

Group ID	org.jbpm	Example: com.myorganization.myprojects ?
Artifact ID	human-resources	Example: MyProject ?
Version ID	1.0	1.0.0 ?

17

The KIE Project: human-resources



The KIE Project: human-resources



REliable, INtelligent & Scalable Systems

The screenshot shows the KIE Project Form Modeler interface. On the left is the 'Project Explorer' with a tree view showing 'example' > 'jbpm' > 'human-resources'. Below this are 'BUSINESS PROCESSES' (including 'hiring') and 'FORM DEFINITIONS' (including 'CreateProposal-taskform', 'hiring-taskform', 'HRInterview-taskform' (selected), 'SignContract-taskform', and 'TechInterview-taskform'). The main area is the 'Form Modeler [HRInterview-taskform]' which has tabs for 'Form data origin', 'Add fields by origin', 'Add fields by type' (selected), and 'Form properties'. The 'Add fields by type' tab shows a list of form elements on the left: HTML label, Separator, Simple subform, Multiple subform, Short text, Long text, Float, Decimal, BigDecimal, BigInteger, and Short. On the right, these elements are placed on a grid. The visible elements are: 'Candidate Name' (HTML label), 'Age' (Short text), 'Email' (Long text), and 'Score' (Short text with a dropdown arrow). The grid has a ruler at the top and a vertical axis on the left.

Building the Human Resources Example

Explore ▾ New Item ▾ Tools ▾

Project Explorer

example ▾ / jbpm ▾ / human-resources ▾ ⊕

Project Editor
Data Modeler

search...



Project: [human-resources:org.jbpm:1.0]

Save

Build & Deploy



Project General Settings

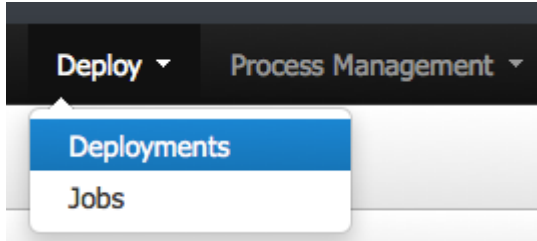
Project Name

Human Resources Example

Project Description

Insert a project description for documentation purposes ...

Building the Human Resources Example



KIE Workbench

Home Authoring ▾ Deploy ▾ Process Management ▾ Tasks ▾ Dashboards ▾

Find User: jbpm ▾

search...



Deployment Units

New Deployment Unit

Refresh



Deployment	Group ID	Artifact	Version	Kie Base Name	Kie Session Name	Runtime strategy	Actions
org.jbpm:evaluation:1.0	org.jbpm	evaluation	1.0	DEFAULT	DEFAULT	SINGLETON	⊗
org.jbpm:human-resources:1.0	org.jbpm	human-resources	1.0	DEFAULT	DEFAULT	SINGLETON	⊗

Create a new Process Instance



REliable, INtelligent & Scalable Systems

KIE Workbench

Home Authoring ▾ Deploy ▾ Process Management ▾ Tasks ▾ Dashboards ▾ Find User: jbpmm ▾

search... 🔍

Process Definitions Refresh ✕ ▾

Name	Version	Actions
Evaluation	1	▶ 🔍
Hiring a Developer	1	▶ 🔍

Details New Instance Options ▾ Refresh ✕ ▾

Definition Id hiring

Definition Name Hiring a Developer

Deployment org.jbpm:human-resources:1.0

Human Tasks Sign Contract
Create Proposal
Tech Interview
HR Interview

Human Task Count 4

User and Groups HR - Sign Contract
Accounting - Create Proposal
IT - Tech Interview
HR - HR Interview

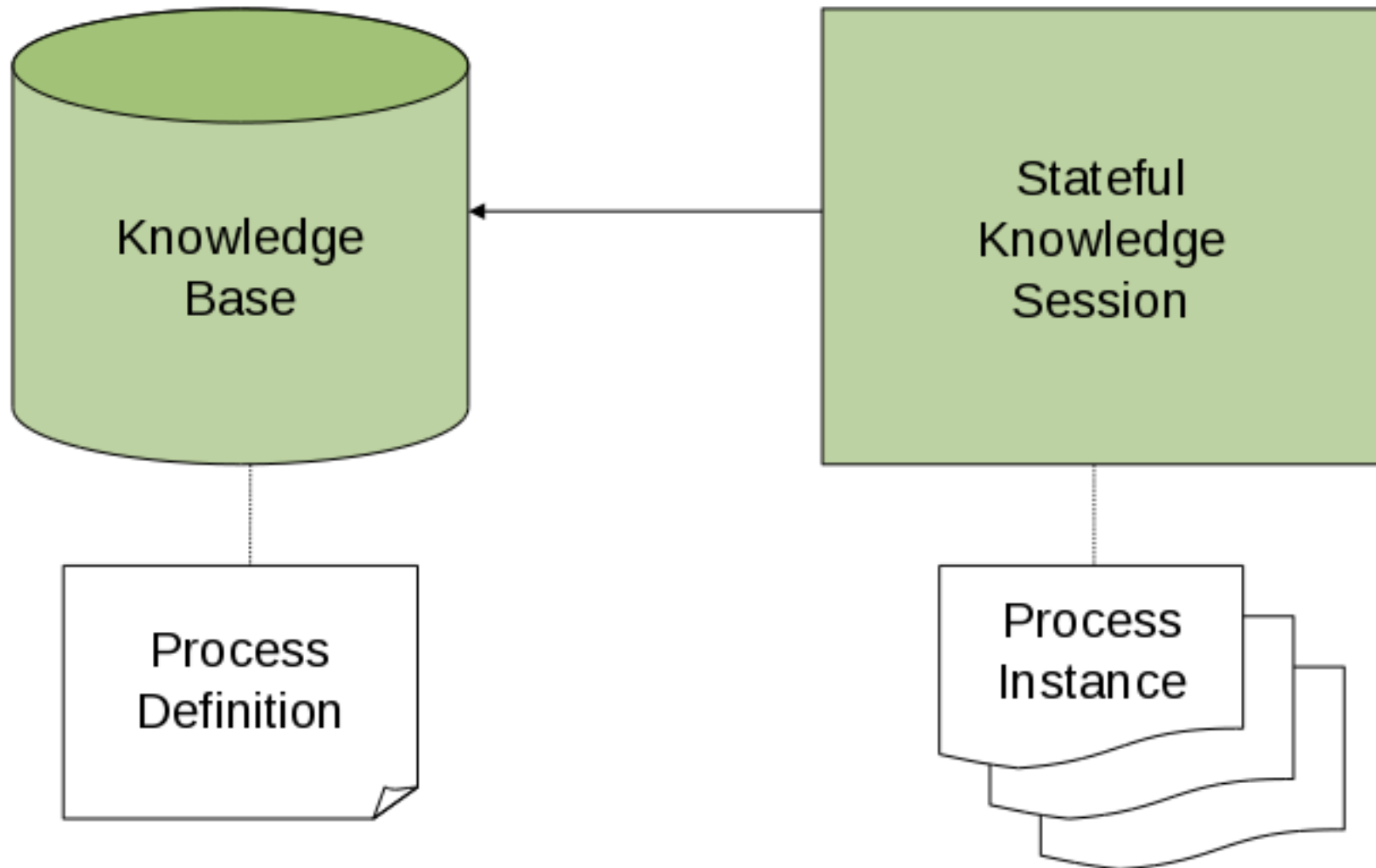
Create a new Process Instance

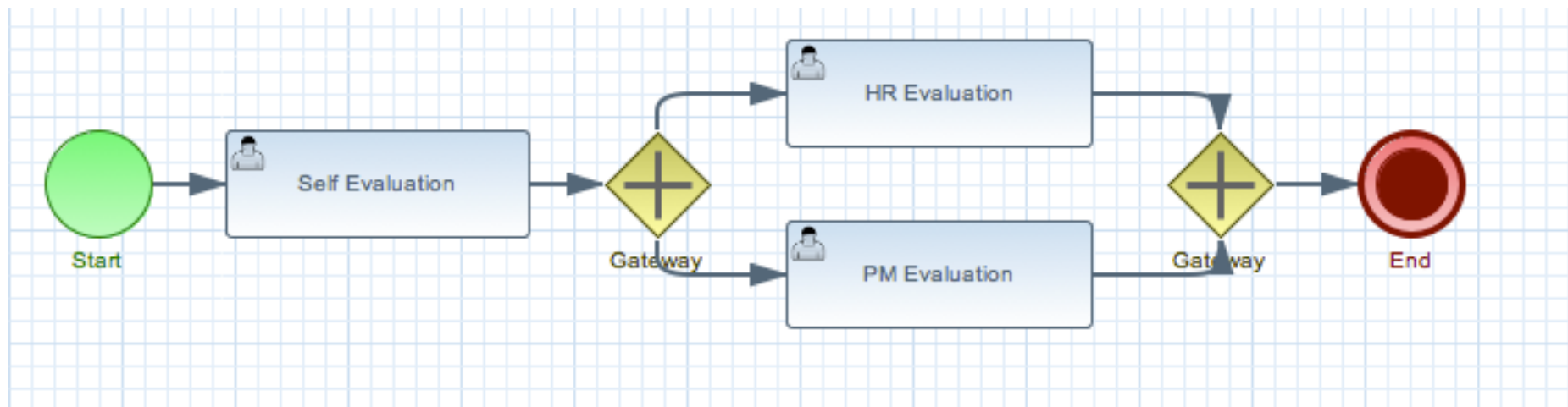
Hiring a Developer

*Candidate Name

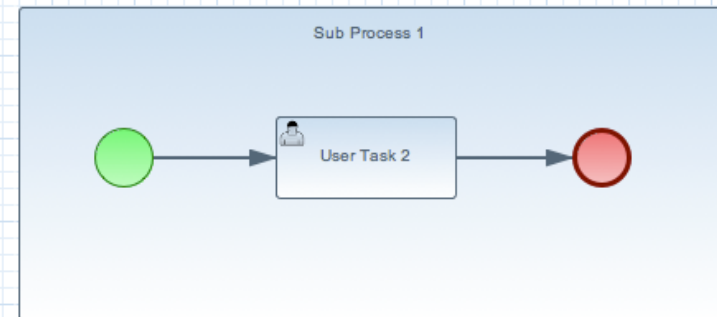
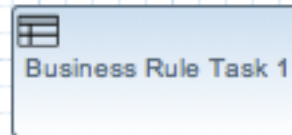
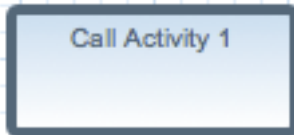
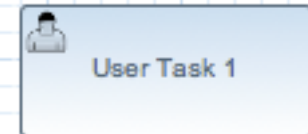
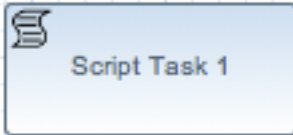
salaboy|

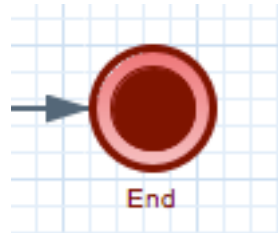
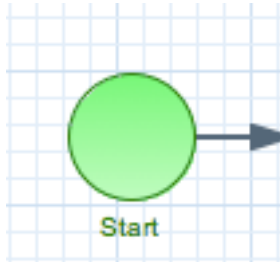




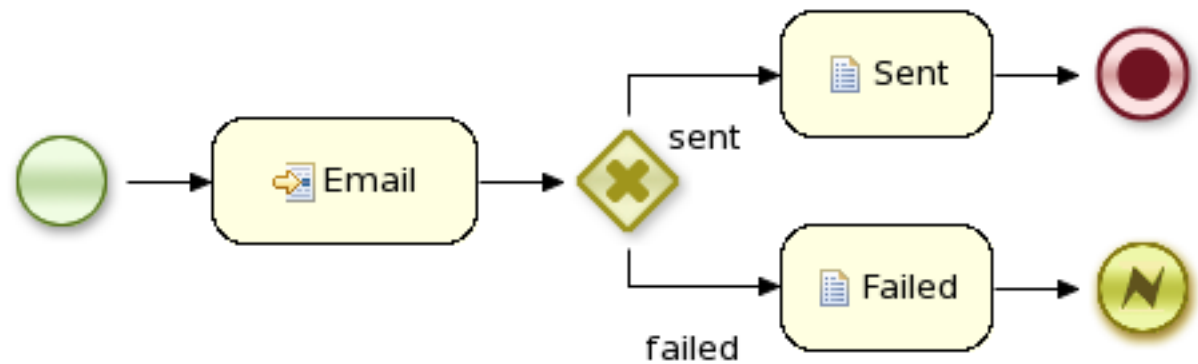
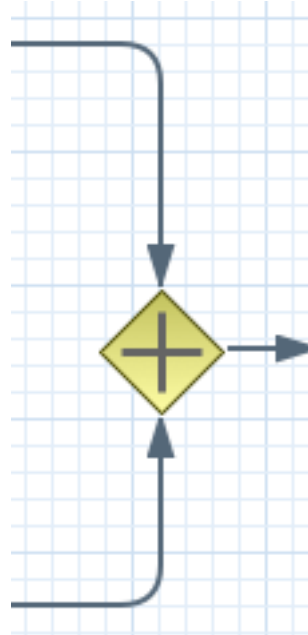
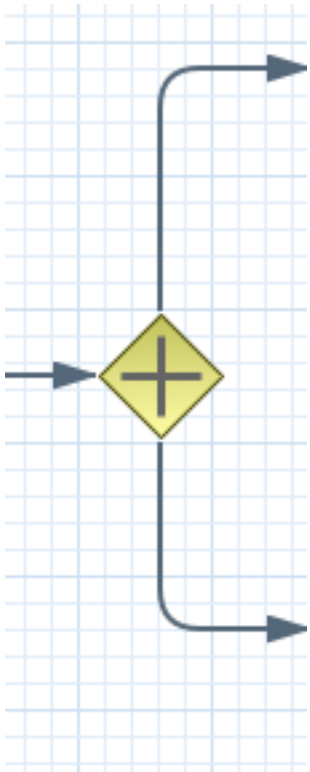


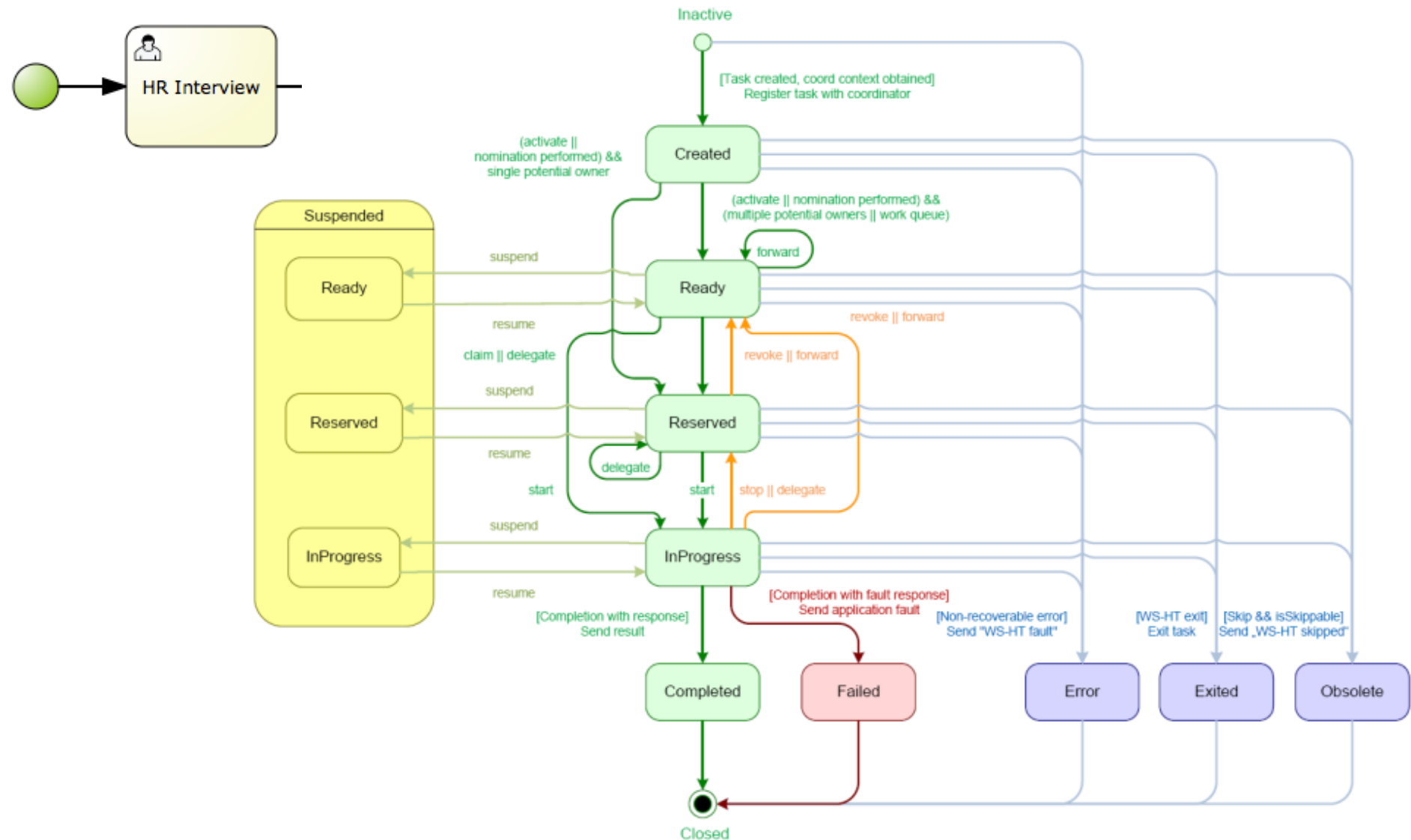
Processes - Activities



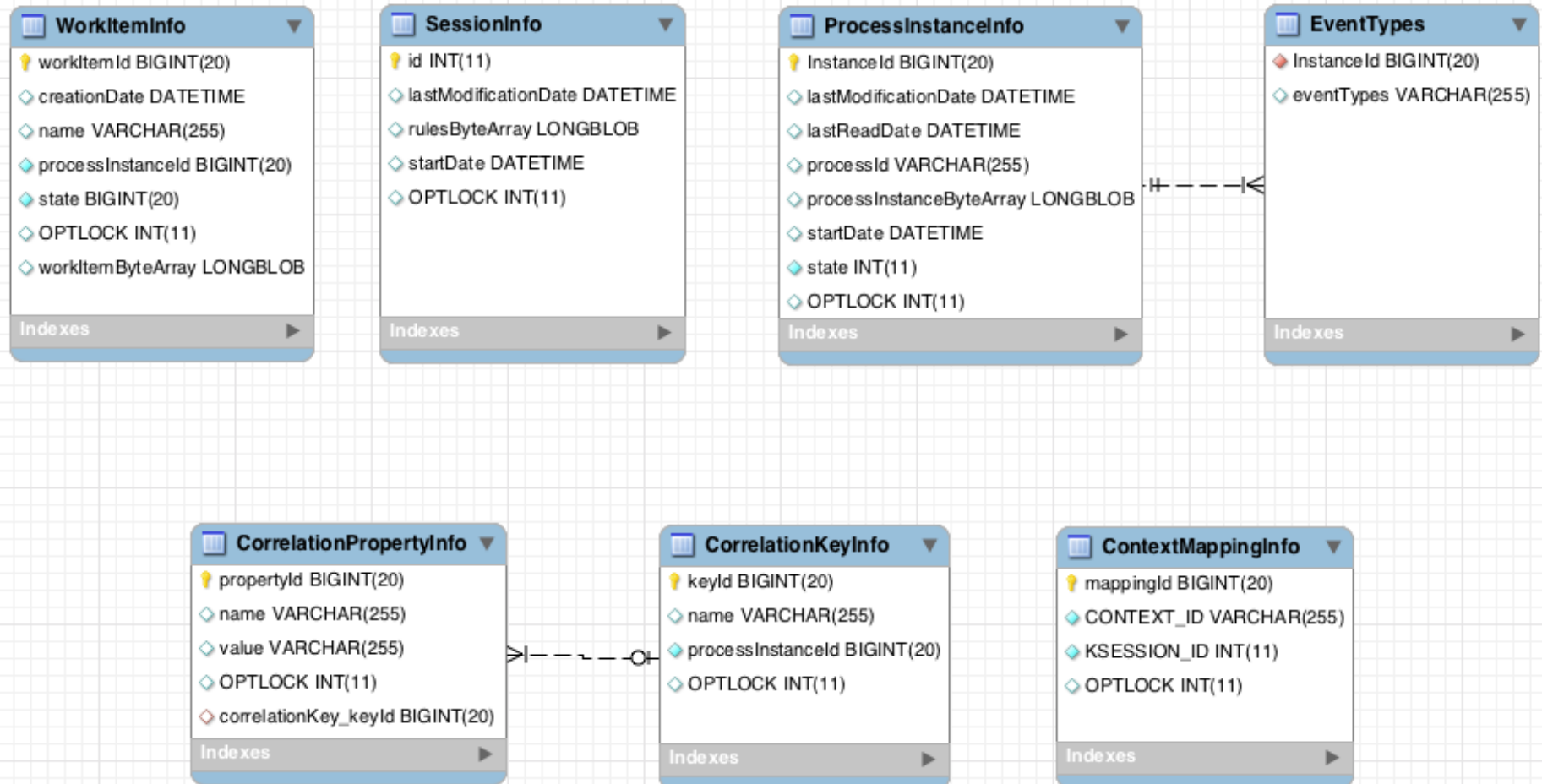


Processes - Gateways





Process Instance State

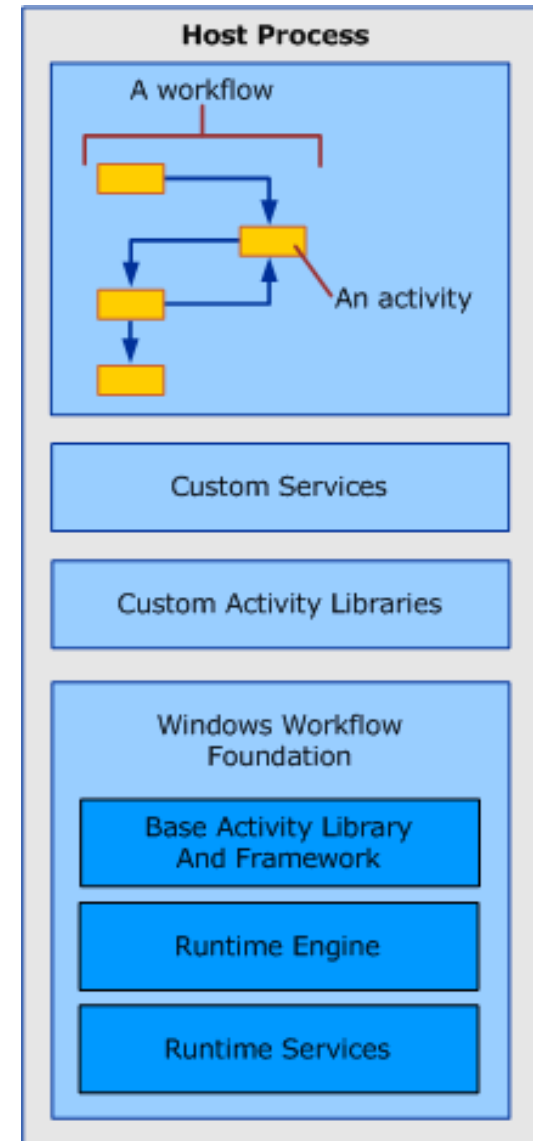
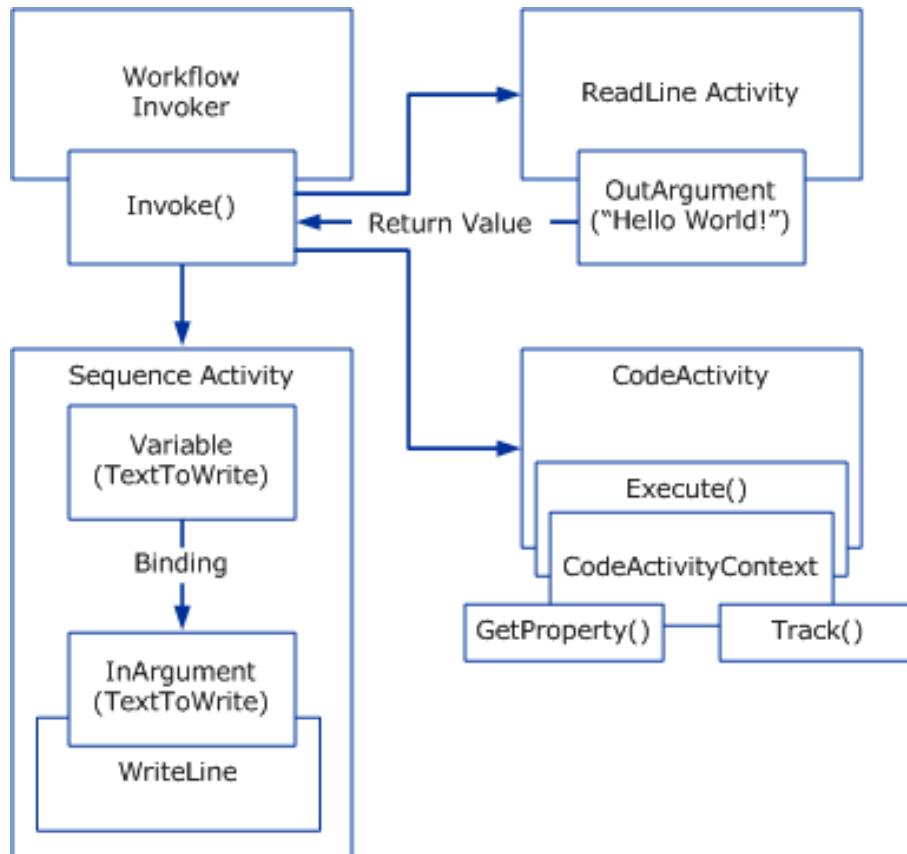


ProcessInstanceLog
<ul style="list-style-type: none">id BIGINT(20)duration BIGINT(20)end_date DATETIMEexternalId VARCHAR(255)user_identity VARCHAR(255)outcome VARCHAR(255)parentProcessInstanceId BIGINT(20)processId VARCHAR(255)processInstanceId BIGINT(20)processName VARCHAR(255)processVersion VARCHAR(255)start_date DATETIMEstatus INT(11)
Indexes

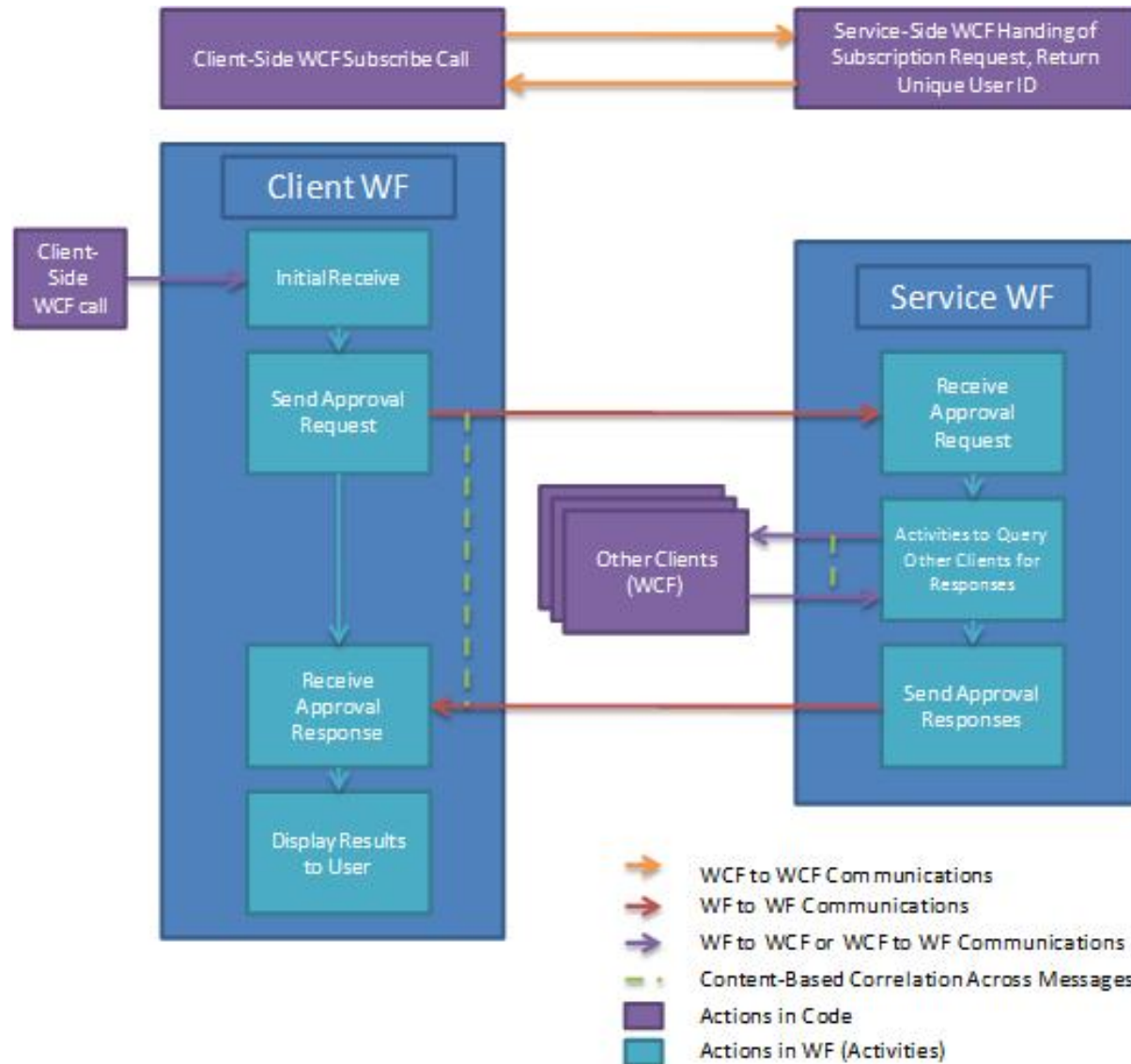
NodeInstanceLog
<ul style="list-style-type: none">id BIGINT(20)connection VARCHAR(255)log_date DATETIMEexternalId VARCHAR(255)nodeId VARCHAR(255)nodeInstanceId VARCHAR(255)nodeName VARCHAR(255)nodeType VARCHAR(255)processId VARCHAR(255)processInstanceId BIGINT(20)type INT(11)workItemId BIGINT(20)
Indexes

VariableInstanceLog
<ul style="list-style-type: none">id BIGINT(20)log_date DATETIMEexternalId VARCHAR(255)oldValue VARCHAR(255)processId VARCHAR(255)processInstanceId BIGINT(20)value VARCHAR(255)variableId VARCHAR(255)variableInstanceId VARCHAR(255)
Indexes

- Workflow Run-time Engine



Document Approval Process



- Requirement
 - Try jBPM. You can submit a separate project to demonstrate workflow application.
 - The workflow application your submitted could be a Document Approval System, in which the approval workflow can be altered easily by changing the description of workflow.

- jBPM Documentation
 - <http://docs.jboss.org/jbpm/v6.0.1/userguide>
- Windows Workflow Foundation
 - [http://msdn.microsoft.com/en-us/library/dd489465\(v=vs.110\).aspx](http://msdn.microsoft.com/en-us/library/dd489465(v=vs.110).aspx)



Thank You!